



# PRO31-M

PLATE HEAT EXCHANGER FRAME

*"Building the best, servicing the rest"™*



## QUALITY

- Skillfully crafted to 3A sanitary standards.
- Operating pressures up to 200 psig[14 bar].

## DEPENDABILITY

- Time tested, stainless steel clad twin-spindle design.
- Even closing, easy maintenance.
- Built for full sanitary washdown environment.

## RELIABILITY

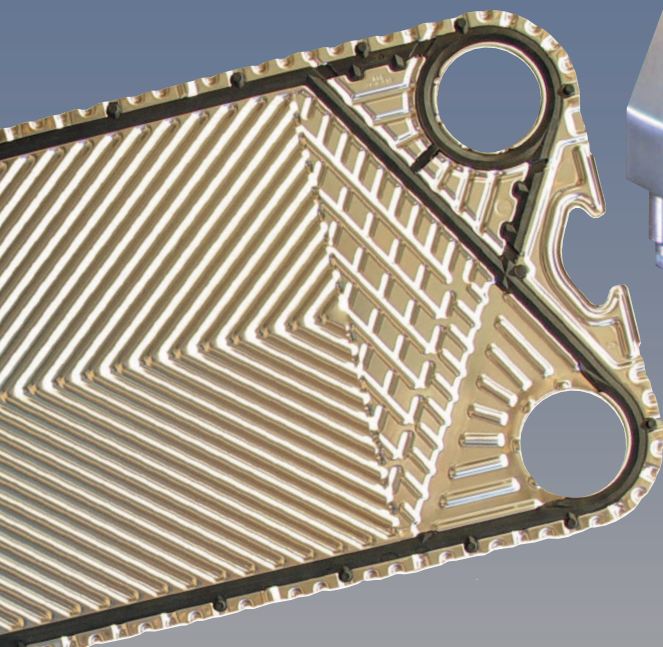
- Rugged and proven design - numerous installations over many years.
- Fixed End and Follower are solid steel clad in heavy 14 gauge stainless steel material.
- Reinforced weldments provide a sturdy design for long frame life.

## EXPANDABILITY

- Frames supplied for plate expandability.
- All eight ports supplied as standard for future duty expansions.
- Terminals available to safely separate heating, cooling or regeneration sections.

## PLATES

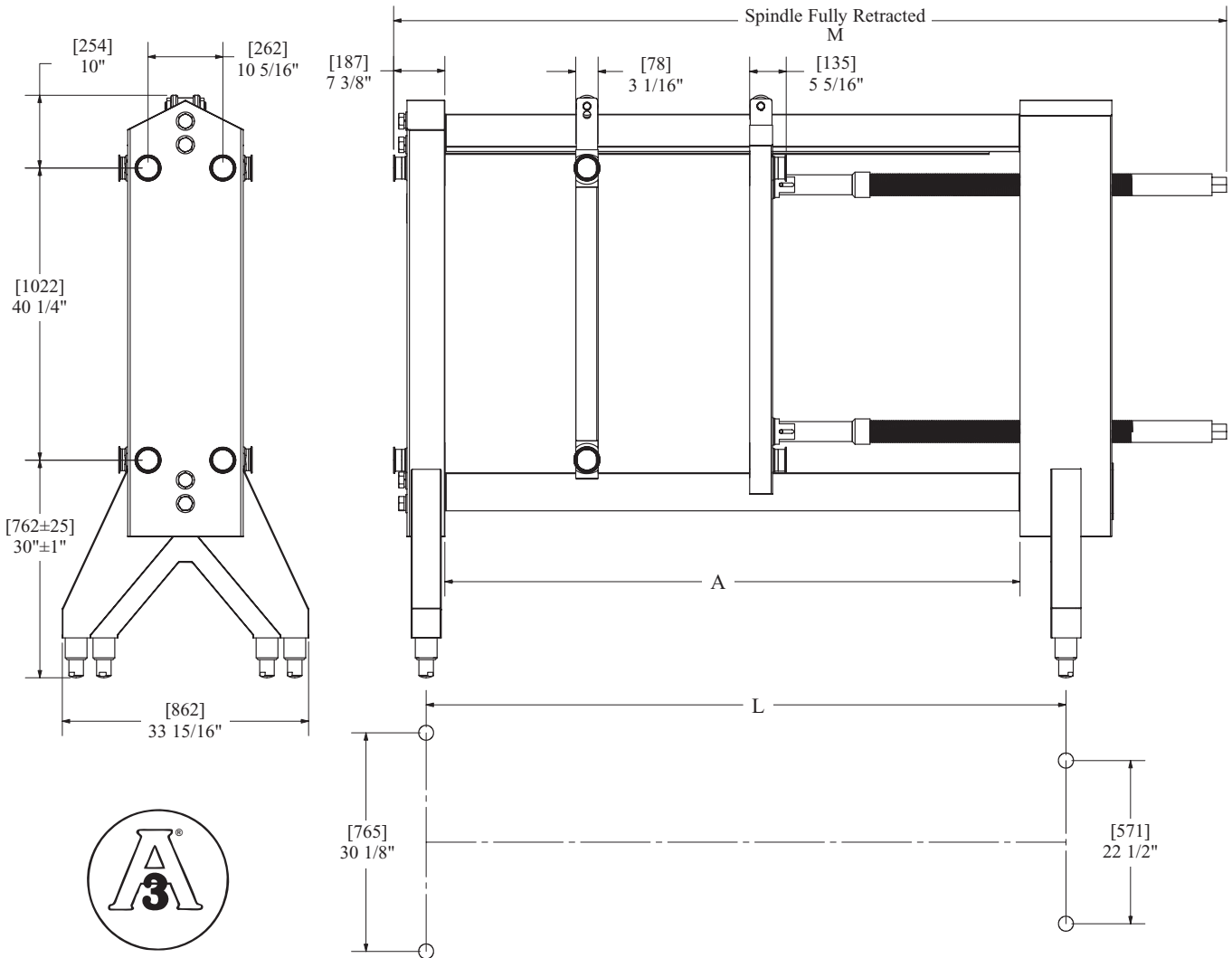
- Pro3 plates measure 45<sup>3</sup>/<sub>8</sub>" x 157<sup>1</sup>/<sub>16</sub>".
- Made of a heavy 0.7mm thick, 316 stainless steel with a high quality sanitary finish.
- Features an improved heat transfer pattern and a wide gap to resist fouling.
- Line-contact support points to increase the life of the plate.
- Increased entrance area cross-section to decrease pressure loss.
- Solid metal-to-metal contact to allow high operational pressures.



Improved Entrance Area



# PRO31-M



*This drawing is the confidential property of AGC HEAT TRANSFER and it must not be reproduced in any form without written consent*

## GENERAL INFORMATION

Plate and Gasket Weight:	5.8 lbs 316 S.S. / 2.63 kg 3.1 lbs Titanium / 1.40 kg
Plate Capacity:	0.32 US Gallons / 1.21 liter
Heat Transfer Area:	3.75 ft <sup>2</sup> / 0.348 m <sup>2</sup>
Plate Thickness:	0.7 mm 316 S.S. 0.6 mm Titanium
Frame Weight: (according to size)	3700 - 4100 lbs / 1678-1860 kg
Standard Frame Connections:	3" Sanitary Clamp
Terminal Connections:	3" Sanitary Clamp
Terminal Weight:	320 lbs / 145kg

FRAME SIZE	BALL FOOT CENTERS [L]	RAIL LENGTH [A]	FULLY OPEN [M]
1	55 <sup>3</sup> / <sub>8</sub> " [1407]	46 <sup>1</sup> / <sub>2</sub> " [1181]	101 <sup>1</sup> / <sub>2</sub> " [2578]
2	68 <sup>3</sup> / <sub>8</sub> " [1737]	59 <sup>1</sup> / <sub>2</sub> " [1511]	114 <sup>1</sup> / <sub>2</sub> " [2908]
3	79 <sup>1</sup> / <sub>8</sub> " [2010]	70 <sup>1</sup> / <sub>4</sub> " [1784]	125 <sup>1</sup> / <sub>4</sub> " [3181]
4	88 <sup>1</sup> / <sub>8</sub> " [2238]	79 <sup>1</sup> / <sub>4</sub> " [2013]	134 <sup>1</sup> / <sub>4</sub> " [3410]
5	95 <sup>5</sup> / <sub>8</sub> " [2429]	86 <sup>3</sup> / <sub>4</sub> " [2203]	141 <sup>3</sup> / <sub>4</sub> " [3600]
6	102 <sup>1</sup> / <sub>4</sub> " [2597]	93 <sup>3</sup> / <sub>8</sub> " [2372]	148 <sup>3</sup> / <sub>8</sub> " [3769]
7	108 <sup>7</sup> / <sub>8</sub> " [2765]	100" [2540]	155" [3937]
8	114 <sup>3</sup> / <sub>8</sub> " [2905]	105 <sup>1</sup> / <sub>2</sub> " [2680]	160 <sup>1</sup> / <sub>2</sub> " [4077]
9	119 <sup>7</sup> / <sub>8</sub> " [3045]	111" [2819]	166" [4216]
10	128 <sup>7</sup> / <sub>8</sub> " [3273]	120" [3048]	175" [4445]
11	138 <sup>7</sup> / <sub>8</sub> " [3527]	130" [3302]	185" [4699]

*Dimensions not to be used for construction*



**Western**  
9109 SE 64th Ave.  
Portland, OR 97206  
503.774.7342  
800.715.8820  
FAX 503.774.2550

**Central**  
8400 Lakeview Pkwy  
Suite 700  
Pleasant Prairie, WI 53158  
847.301.6890  
888.489.8820

**Eastern**  
10129 Piper Lane  
Bristow, VA 20136  
703.257.1660  
800.825.8820  
FAX 703.330.7940



AMERICAN  
MADE

**proflow** sanitary  
S E R I E S

See us on the web at [www.AGCHeatTransfer.com](http://www.AGCHeatTransfer.com)