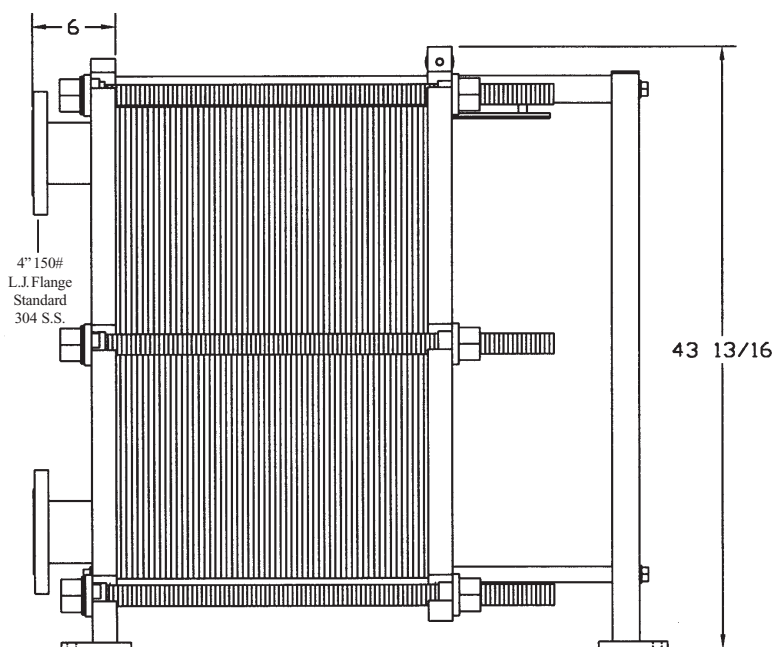
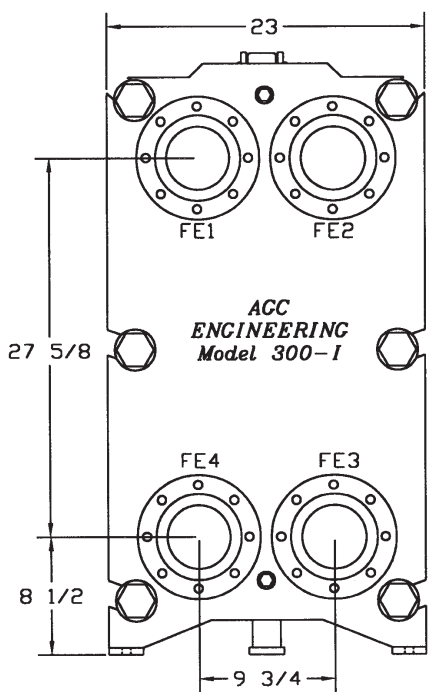
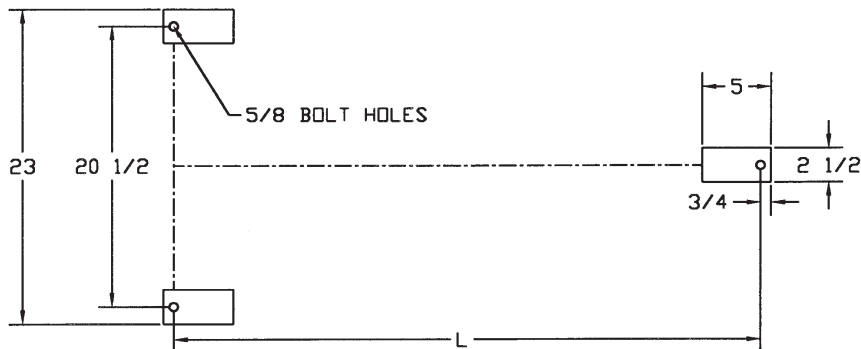


MODEL 300-1

"Building the Best, Servicing the Rest"

Heavy-duty powder coated mild steel frame with stainless wetted parts



NOMINAL RAIL LENGTH, IN	L, IN	PLATE CAPACITY
12	18 1/2	35
24	30 1/2	100
36	42 1/2	180
48	54 1/2	260

GENERAL INFORMATION	
Plate and Gasket weight:	4.0 lbs
Plate capacity:	0.26 US Gallons
Frame weight: (according to size)	850-875 lbs
Standard connections frame:	150 lb Flange
Heat Transfer Area:	3.20 ft ²
Plate Thickness:	0.6mm

Dimensions subject to change without notice



Western Factory

8969 SE 58th Avenue
Portland, OR 97206
503.774.7342
800.715.8820
FAX 503.774.2550

Eastern Factory

8509 Quarry Road
Manassas, VA 20110
703.257.1660
800.825.8820
FAX 703.330.7940