



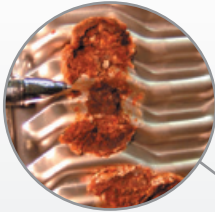
PlateCheck™

SEEING IS BELIEVING™

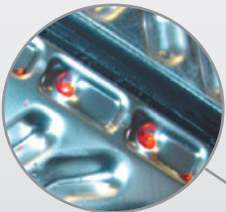
The PHE inspection that fully meets 3A Sanitary Standards

THE ALL INCLUSIVE TEST

Pin holes, gasket condition, CIP cleaning response, plate corrosion, excessive plate wear and frame condition — **all in one easy test.**



CIP RESPONSE



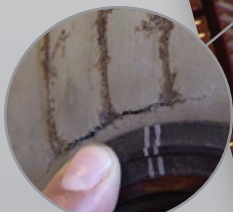
PIN HOLES



**PLATE CORROSION/
WEAR**



**GASKET
CONDITION**



**FRAME
CONDITION**

NOTE: Most plate units checked in 3 to 4 hours total. A detailed, confidential written report is prepared for plant records. call or go online for additional information and a quote.



PlateCheck™
Seeing is Believing

www.AGCHeatTransfer.com



WESTERN

9109 SE 64th Avenue | Portland, OR 97206
503.774.7342 | 800.715.8820
FAX 503.774.2550

CENTRAL

1325 Remington Rd., Ste. T
Schaumburg, IL 60173
847.301.6890 | FAX 503.774.2550


EASTERN

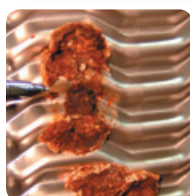
10129 Piper Lane | Bristow, VA 20136
703.257.1660 | 800.825.8820
FAX 703.330.7940

PlateCheck™

SEEING IS BELIEVING™

The clear choice in PHE inspection methods

	Plate Check™	Helium Test	Salt Test	Air-Bubble Test
Fully Meets Current 3A Standard 11-09 (8/2010)	YES	NO	NO	NO
Measurement Sensitivity Independent of PHE's Size (Large and small units tested equally)	YES	NO	NO	NO
Accurately Locates Defects on All Plates	YES	NO	NO	NO
Utilizes Food Grade/Non-Toxic Fluids	YES	YES (PHASE 1 ONLY)	YES	YES
Commonly Completed on HTST's in Less than 4 hours	YES	YES (PHASE 1 ONLY)	YES	YES
Completely Inspects Plate and Gasket Conditions	YES	NO	NO	NO
Provides Feed Back on CIP Cleaning Efficiency	YES	NO	NO	NO
Tests the Entire Wetted Surface of Every Plate	YES	NO	NO	NO
Report Documents all Aspects of PHE's Condition (Frame)	YES	NO	NO	NO
Verifies Presence and Location of Drain Plates in HTST's	YES	NO (PHASE 2 YES)	NO	NO



CIP Response



Pin Holes



Gasket Condition

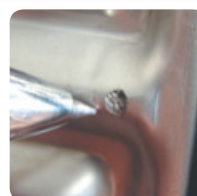
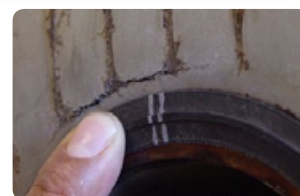


Plate Corrosion/Wear



Frame Condition



WESTERN

9109 SE 64th Avenue | Portland, OR 97206
503.774.7342 | 800.715.8820 | FAX 503.774.2550

CENTRAL

1325 Remington Rd., Ste. T Schaumburg, IL 60173
847.301.6890 | FAX 503.774.2550

EASTERN

10129 Piper Lane | Bristow, VA 20136
703.257.1660 | 800.825.8820 | FAX 703.330.7940



www.AGCHeatTransfer.com