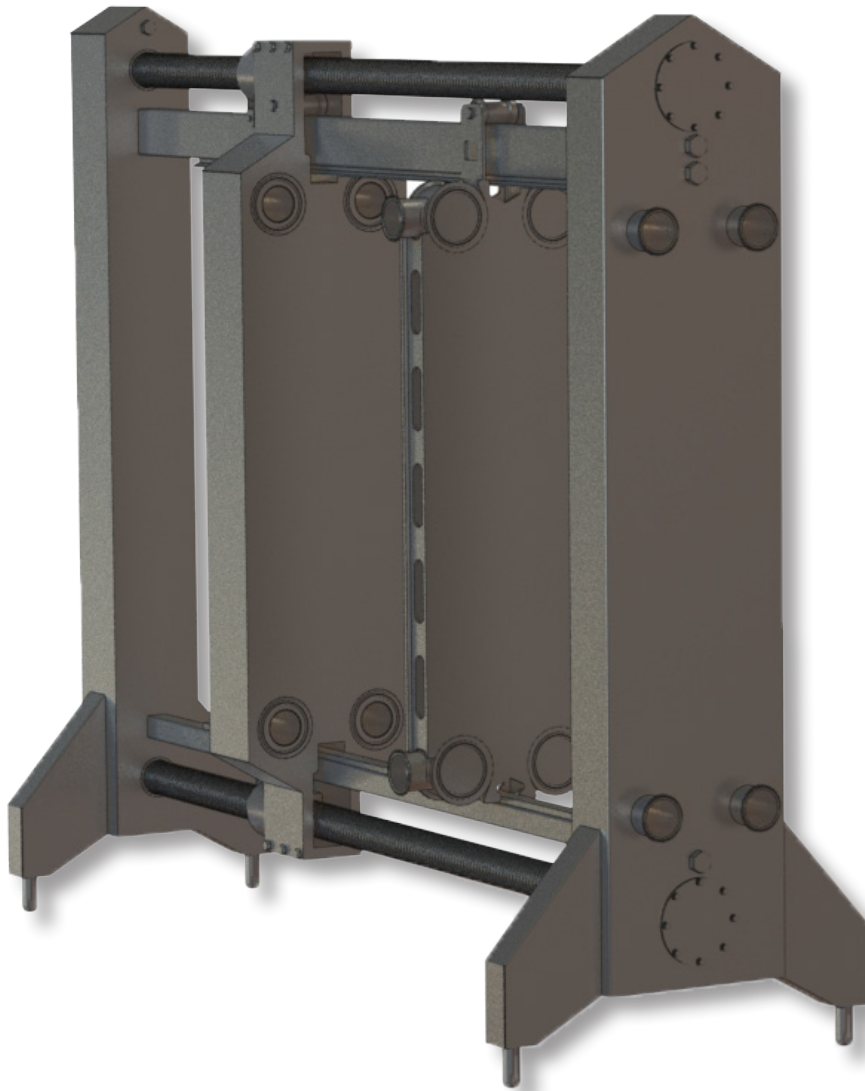




PRO8-MD

PLATE HEAT EXCHANGER FRAME

"Building the best, servicing the rest"[™]



QUALITY

- Skillfully crafted to 3-A sanitary standards.
- Operating pressures up to 200 psig [14 bar].
- Made in the USA.

DEPENDABILITY

- Footprint remains unchanged from closed to fully open position.
- Even closing, easy maintenance.
- Stainless steel clad design polished to a consistent #4 finish.
- All wetted parts in ANSI 316 stainless steel.
- Built for full sanitary washdown environment.

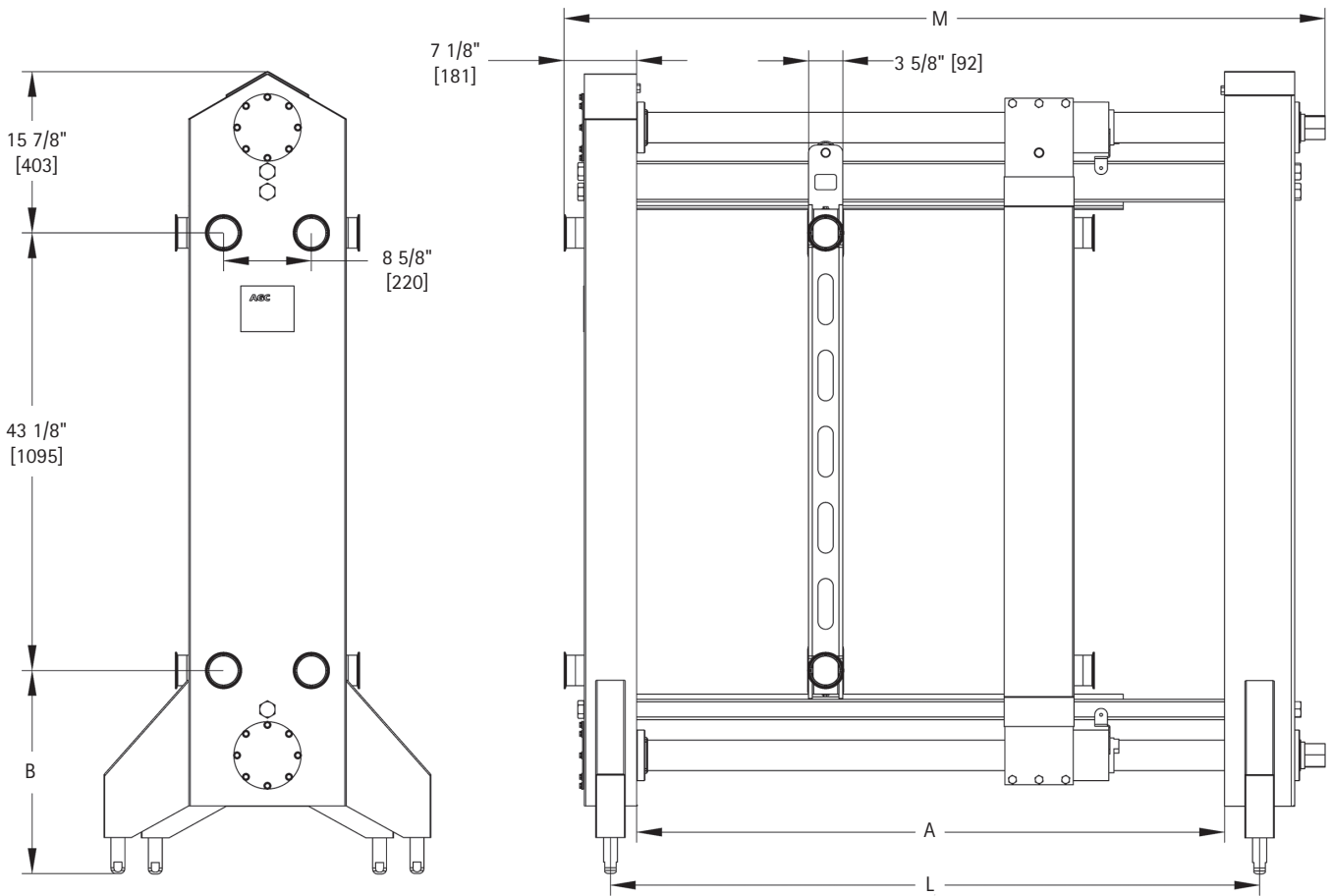
EXPANDABILITY

- Extended frame lengths for extremely large plate packs.
- Allows plate packs from 3 plates to maximum capacity without replacing any frame components.
- All eight ports supplied as standard for future duty expansions.
- Terminals available to safely separate multiple sections.

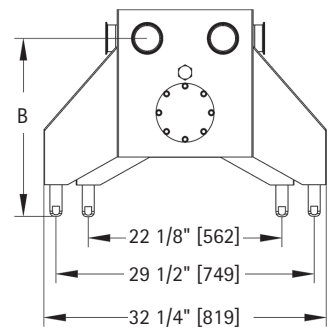
PLATES

- Sturdy Pro8 plate (0.7mm) in a bright annealed finish. Made in the USA.
- Line-contact support points to increase the life of the plate.
- Increased entrance area cross-section to decrease pressure loss.
- Solid metal-to-metal contact to allow high operational pressures.
- Snap-in gasket.

PRO8-MD



This drawing is the confidential property of AGC HEAT TRANSFER and it must not be reproduced in any form without written consent



GENERAL INFORMATION	
Plate and Gasket Weight:	316 Stainless Steel 5.9 lbs. [2.68 kg] C-276 Alloy 5.8 lbs. [2.63 kg]
Volume (per channel):	0.38 gallons [1.4 L]
Heat Transfer Area:	4.1ft ² [0.38m ²]
Plate Thickness:	316 Stainless Steel 0.7mm C-276 Alloy 0.6mm
Frame Weight: (according to size)	2250 - 2730 lbs [1020 - 1238 kg]
Standard Frame Connections:	3" Sanitary Clamp
Terminal Connections:	3" Sanitary Clamp
Terminal Weight:	170 lbs [77 kg]

LEG OPTIONS	LEG HEIGHT [B]
S1	19 3/4" ±1" [500±25]
S2	23 3/4" ±1" [602±25]
S3	25 3/4" ±1" [653±25]
S4	30" ±1" [761±25]

FRAME SIZE	BALL FOOT CENTERS [L]	RAIL LENGTH [A]	FULLY OPEN [M]	PLATE CAPACITY
1	64" [1625]	58" [1473]	75" [1905]	3-133
2	78" [1981]	82" [2083]	99" [2515]	3-230
3	112" [2845]	106" [2692]	123" [3124]	3-327
4	136" [3454]	130" [3302]	147" [3734]	3-425
5	160" [4064]	154" [3912]	171" [4343]	3-552

Dimensions not to be used for construction



Western

3109 NE 230th Avenue
Fairview, OR 97024
+1.503.774.7342
+1.800.715.8820
FAX +1.503.774.2550

Central

8400 Lakeview Parkway
Suite 700
Pleasant Prairie, WI 53158
+1.847.301.6890
+1.888.489.8820

Eastern

10129 Piper Lane
Bristow, VA 20136
+1.703.257.1660
+1.800.825.8820
FAX +1.703.330.7940



AMERICAN
MADE

proflow sanitary
S E R I E S

See us on the web at www.agcheattransfer.com