



# PRO3-XPH

## PLATE HEAT EXCHANGER FRAME

*"Building the best, servicing the rest"*<sup>™</sup>



### QUALITY

- Skillfully crafted to 3A sanitary standards.
- Working pressures up to 10 bar (150 PSI).
- Made in the USA.

### DEPENDABILITY

- Solid Stainless Steel Hygienic Frame.
- Oversized tie bolts for easy open/close operation.

### RELIABILITY

- All wetted parts in ANSI 316 stainless steel.

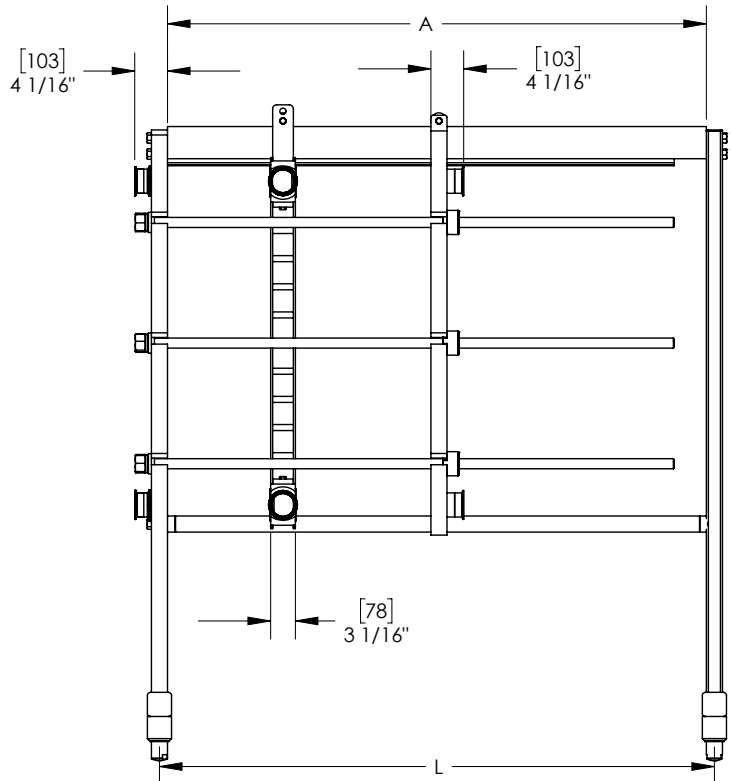
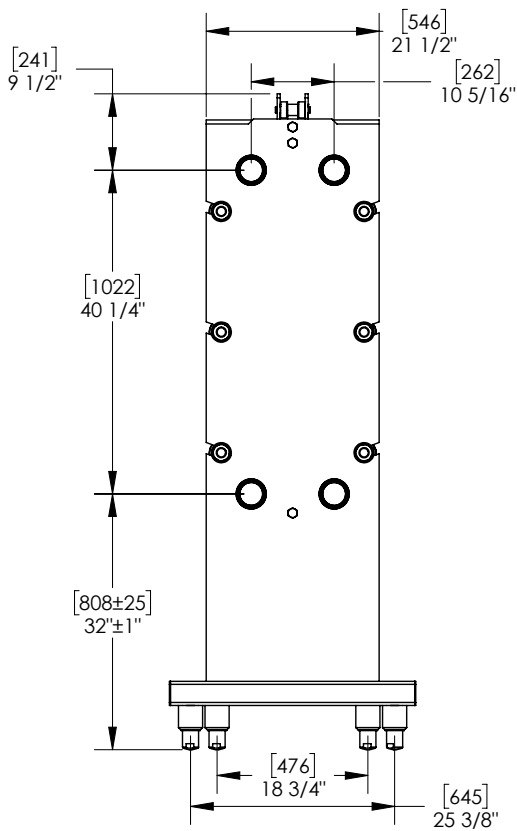
### EXPANDABILITY

- Frames supplied for plate expandability.
- Terminals available to safely separate heating, cooling or regeneration sections.
- Reconfigurable ports - No welding required

### PLATES

- Sturdy Pro3 plates (0.7mm) in a bright annealed finish. Made in the USA.
- Line-contact support points to increase the life of the plate.
- Increased entrance area cross-section to reduce pressure loss.
- Solid metal-to-metal contact to allow high operational pressures.
- Snap-in gasket

# PRO3-XPH



## GENERAL INFORMATION

Plate and Gasket Weight:	2.63 kg / 5.8 lbs [Stainless Steel 316] 2.40 kg / 5.3 lbs [Alloy C276]
Plate Capacity:	1.21 L / 0.32 US Gallons
Heat Transfer Area:	0.35 m <sup>2</sup> / 3.75 ft <sup>2</sup>
Plate Thickness:	0.7mm [Stainless Steel 316]
Frame Weight: (according to size)	782-912 kg / 1724-2011 lbs.
Standard Frame Connections:	3" Sanitary Clamp
Terminal Connections:	3" Sanitary Clamp
Terminal Weight:	74 kg / 163 lbs

FRAME SIZE	BALL FOOT CENTERS [L]	RAIL LENGTH [A]	PRO3 PLATE CAPACITY
1	46" [1168]	44" [1118]	119
2	69" [1753]	67" [1702]	223
3	93" [2362]	91" [2311]	331
4	117" [2972]	115" [2921]	439

*Dimensions not to be used for construction*



*This drawing is the confidential property of AGC HEAT TRANSFER and it must not be reproduced in any form without written consent.*



**Western**  
9109 SE 64th Ave.  
Portland, OR 97206  
+1.503.774.7342  
+1.800.715.8820  
FAX +1.503.774.2550

**Central**  
8400 Lakeview Parkway  
Suite 700  
Pleasant Prairie, WI 53158  
+1.847.301.6890  
+1.888.489.8820

**Eastern**  
10129 Piper Lane  
Bristow, VA 20136  
+1.703.257.1660  
+1.800.825.8820  
FAX +1.703.330.7940



AMERICAN  
MADE

**proflow** sanitary  
S E R I E S

See us on the web at [www.agcheattransfer.com](http://www.agcheattransfer.com)